

**TULLOUSE**  
**THEATRE**

NEW ORLEANS

**VENUE**  
**SPECIFICATIONS**

# TOULOUSE THEATRE—NEW ORLEANS

## GENERAL VENUE SPECIFICATIONS

- Independent entrance from street to lower tier of Showroom for load in and Artist entrance.
- Concert Hall Dimensions & Descriptions
  - First floor of the Showroom has 3 tiers
    - The entrance to the music room, the FOH booth, and the Stage Bar are located on this tier. This tier has a dancefloor clearance of 20' x 8' on the stage left side directly in front of FOH booth position.
    - Middle tier is 35' x 12' deep, no obstructions.
    - The stage entrance and tunnel entryway are located stage left of the Lower tier. Stage right of these entryways, there is a dancefloor clearance of 28' x 20'.
  - 50' Deep from downstage lip to rear wall
  - 35' Max Width
  - 18' max ceiling height from lower dance floor
  - Second floor is the Premium Mezzanine level
    - It is a balcony area, located in rear of concert hall: 24' x 8'
- Sellable Capacities
  - **420 Standing** (375 Standing GA Downstairs, 50 Standing GA Premium Mezzanine)
  - 160 Seated
- There are no legal age restrictions however, the City of New Orleans implements an 8 PM curfew for youth 18 and under at all times in the French Quarter.
- There is no legal curfew. Showroom curfew is 2AM unless otherwise noted.
- The backstage/dressing rooms areas should be cleared no later than 1 hour after the last act.
- Union labor is not required.
- 1 green room with bathroom available to touring party.
- Showers & laundry are not available on site.

# TOULOUSE THEATRE—NEW ORLEANS

## PARKING & LOADING

- **Loading**

- Load-ins begin at 2pm or later through the right-most front door of the venue.
- Early load-ins (before 2pm) may incur additional show expenses.
- On site case storage is somewhat limited. Please advance dead case storage needs.
- A three step lift is required to reach stage level.

- **Parking**

- Paid parking is available in the garage directly across the street from the venue and typically costs \$40 + Tax for 12-24 hours. The garage entrance is located at 535 Chartres St, New Orleans, LA, 70130.
- Paid parking is also available in the lot one block past the venue on Toulouse St and typically costs \$40 + Tax for 12-24 hours. The lot entrance is located at 520 Toulouse St, New Orleans, LA, 70130.
- Free street parking is available on Sundays only in the loading zone directly across the street on a first come, first served basis
- No shore power is available.

# TOULOUSE THEATRE—NEW ORLEANS

## SOUND SYSTEM SPECIFICATIONS

### WIRED MICS:

ONE [1] Shure B52  
ONE [1] Shure Beta 91A  
FIVE [5] Shure SM58  
FIVE [5] Shure SM57  
ONE [1] Shure BETA SM57A  
FIVE [5] Shure SM137  
FOUR [4] Sennheiser e904  
THREE [3] Sennheiser e906

### DIRECT INPUTS:

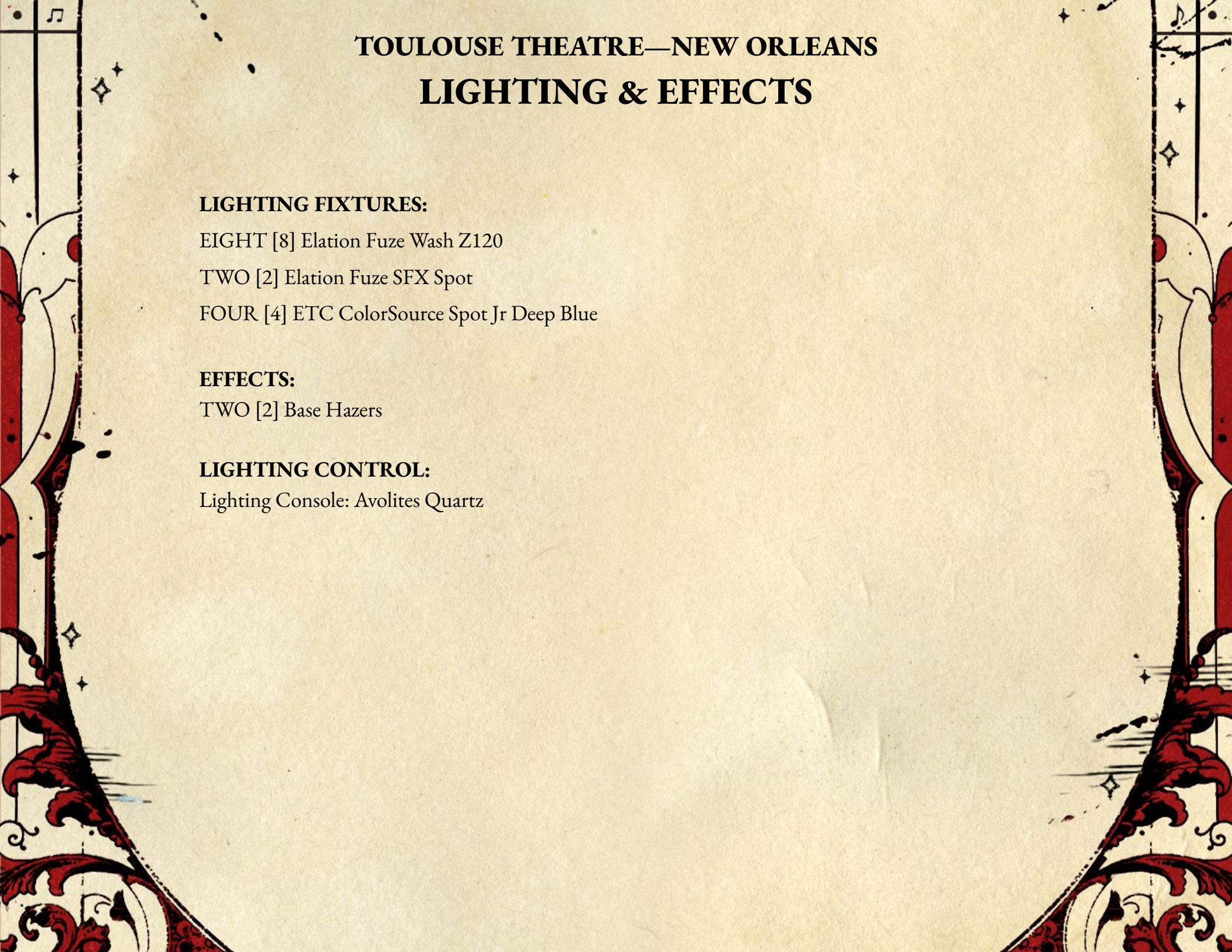
FOUR [4] Radial ProDI Passive DI  
FOUR [4] Radial ProD2 Passive Stereo DI  
TWO [2] Radial Pro48 Active DI  
TWO [2] Radial Pro AV2 Multimedia DI  
TWO [2] RapcoHorizon DB-1 Straight Line Passive High to Low Impedance Converter

### MIC STANDS:

SIXTEEN [16] K&M Tall Tripod Boom  
EIGHT [8] K&M Short Tripod Boom  
FOUR [4] K&M Straight Round Base

### MISCELANEOUS:

TWO [2] Radial IC-1 Balanced Line Isolator  
ONE [1] Behringer CT100 Cable Tester



**TOULOUSE THEATRE—NEW ORLEANS**  
**LIGHTING & EFFECTS**

**LIGHTING FIXTURES:**

EIGHT [8] Elation Fuze Wash Z120

TWO [2] Elation Fuze SFX Spot

FOUR [4] ETC ColorSource Spot Jr Deep Blue

**EFFECTS:**

TWO [2] Base Hazers

**LIGHTING CONTROL:**

Lighting Console: Avolites Quartz

# TOULOUSE THEATRE—NEW ORLEANS

## STAGE DIMENSIONS

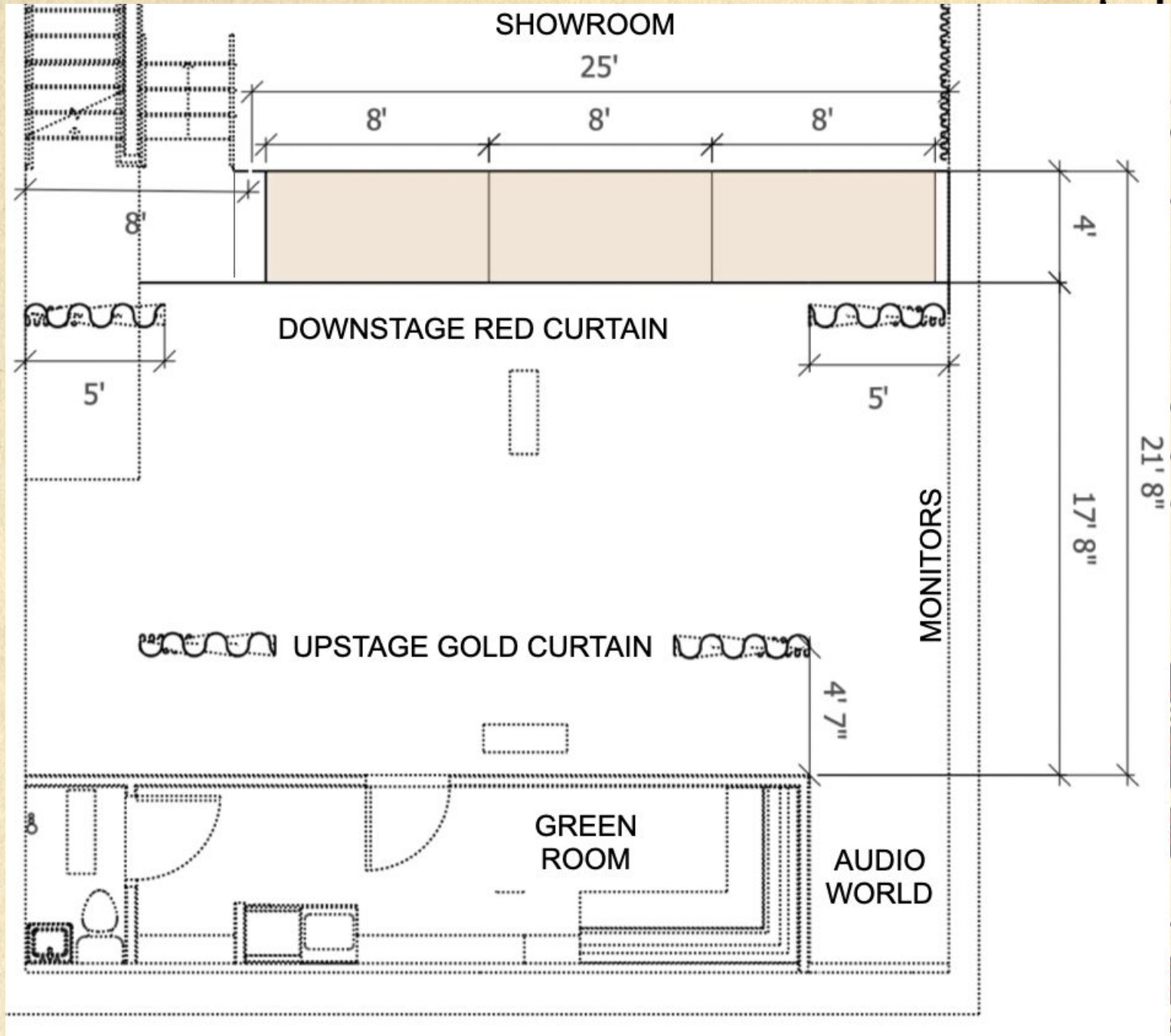
Full Stage:

Height: 2'  
 Max Depth: ≈ 22'  
 Min Depth: ≈ 18'  
 Max Width: 33'

Performance Area Options:

**Default with Three 4'x8' Stage Decks**  
 (marked in orange)  
 Max Depth: ≈ 22'  
 Depth from Gold Curtain: ≈ 17'  
 Width: 23'

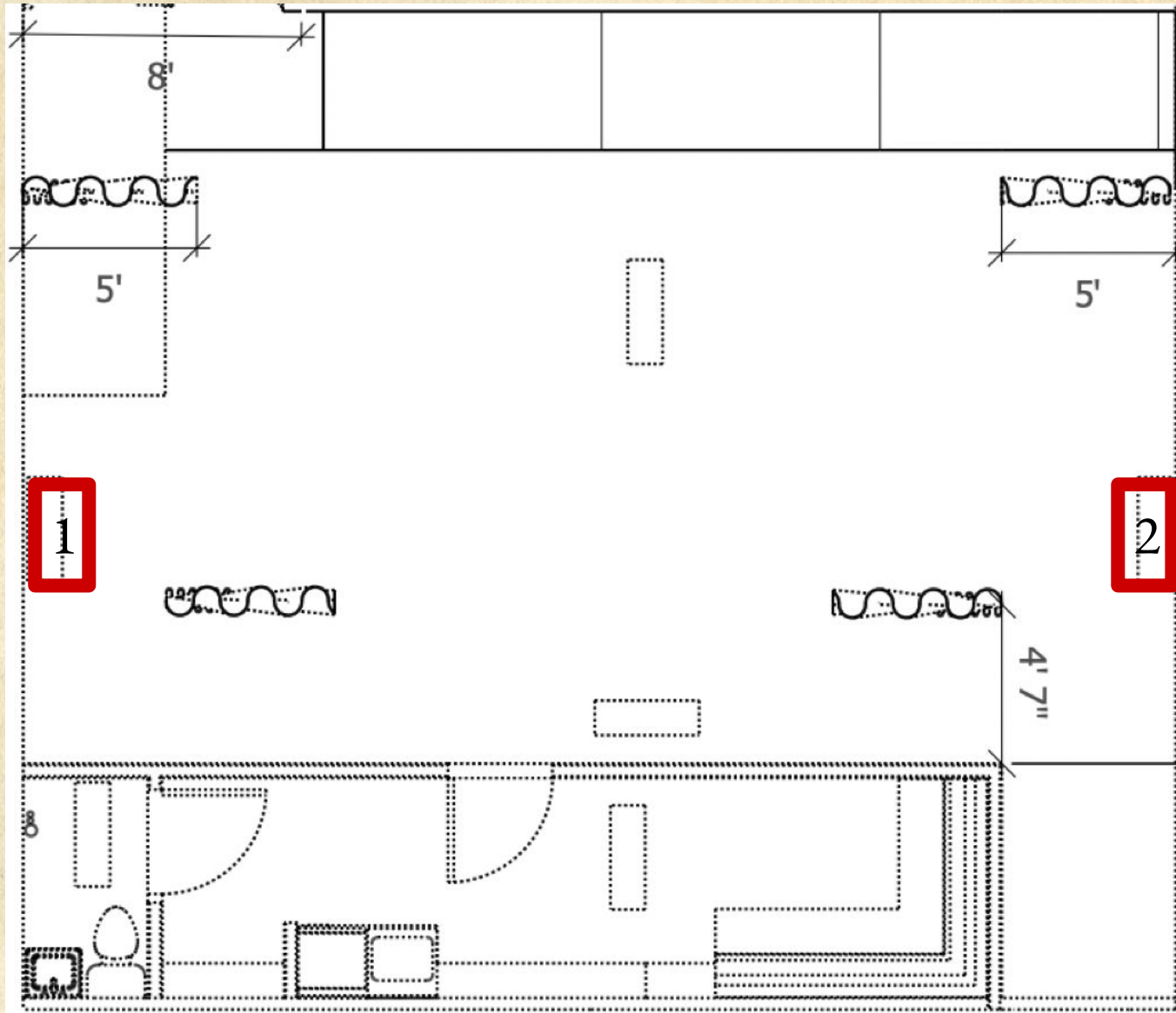
**Without Stage Decks:**  
 Max Depth: ≈ 18'  
 Depth from Gold Curtain: ≈ 13'



# TOULOUSE THEATRE—NEW ORLEANS

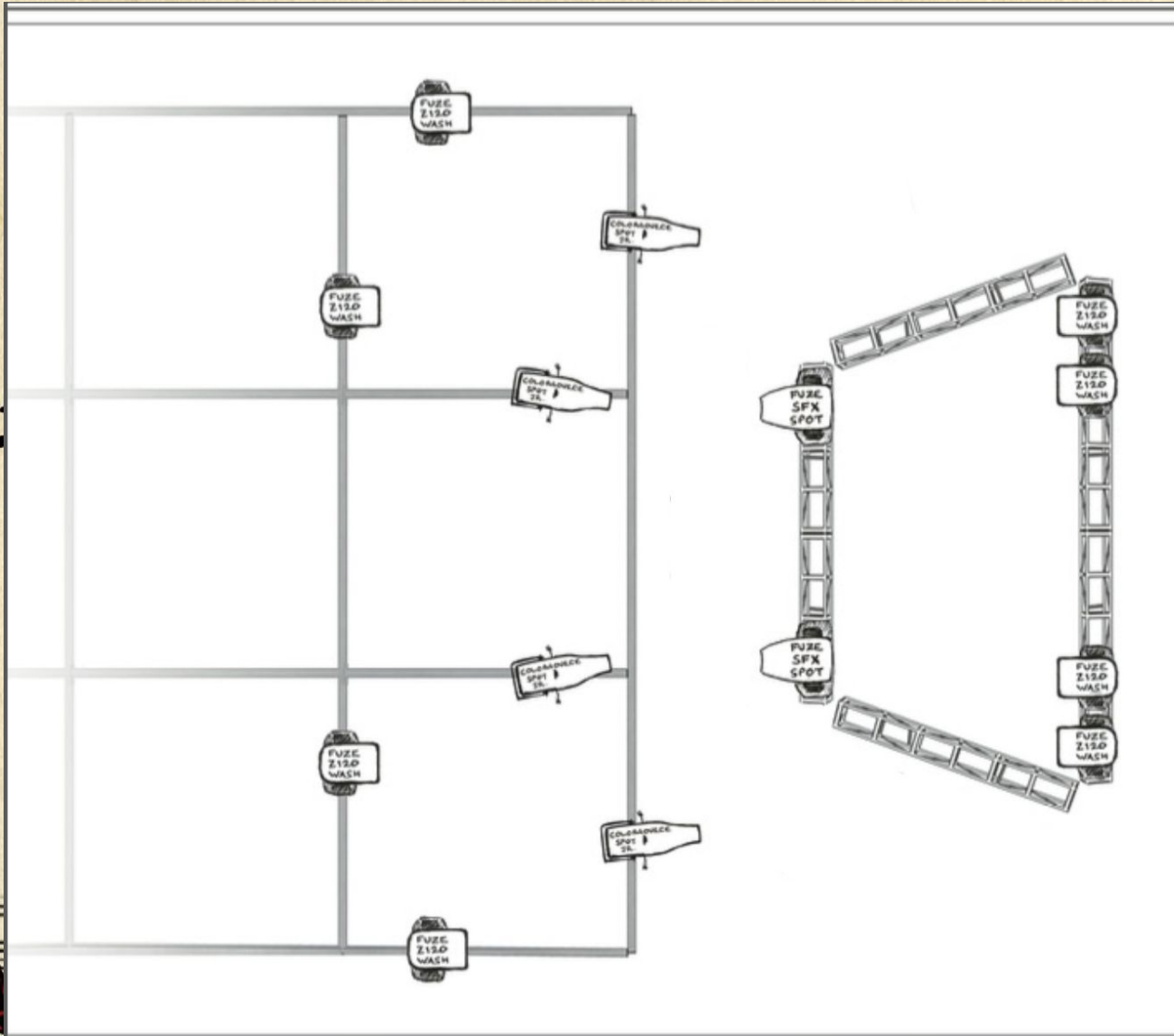
## STAGE POWER

1. 200 AMP Panel with Cam Locks
2. 100 AMP Panel with Cam Locks



# TOULOUSE THEATRE—NEW ORLEANS

## LIGHTING PLOT



### *Toulouse Theatre* *House Lighting Plot*

*Version: 1.1*

*Drawn By:  
Rich Stenbridge*

*Date: July 18, 2021*

*Please note... Not To Scale  
(in any way whatsoever)*



#### **EFFECTS:**

TWO [2] Base Hazers

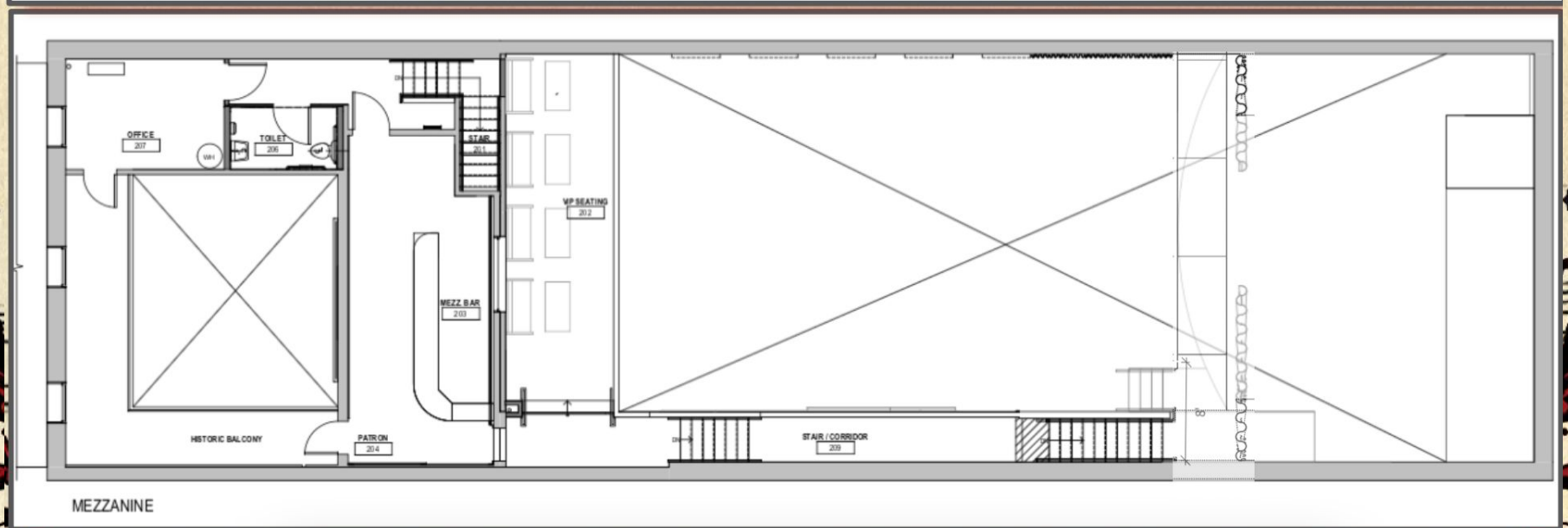
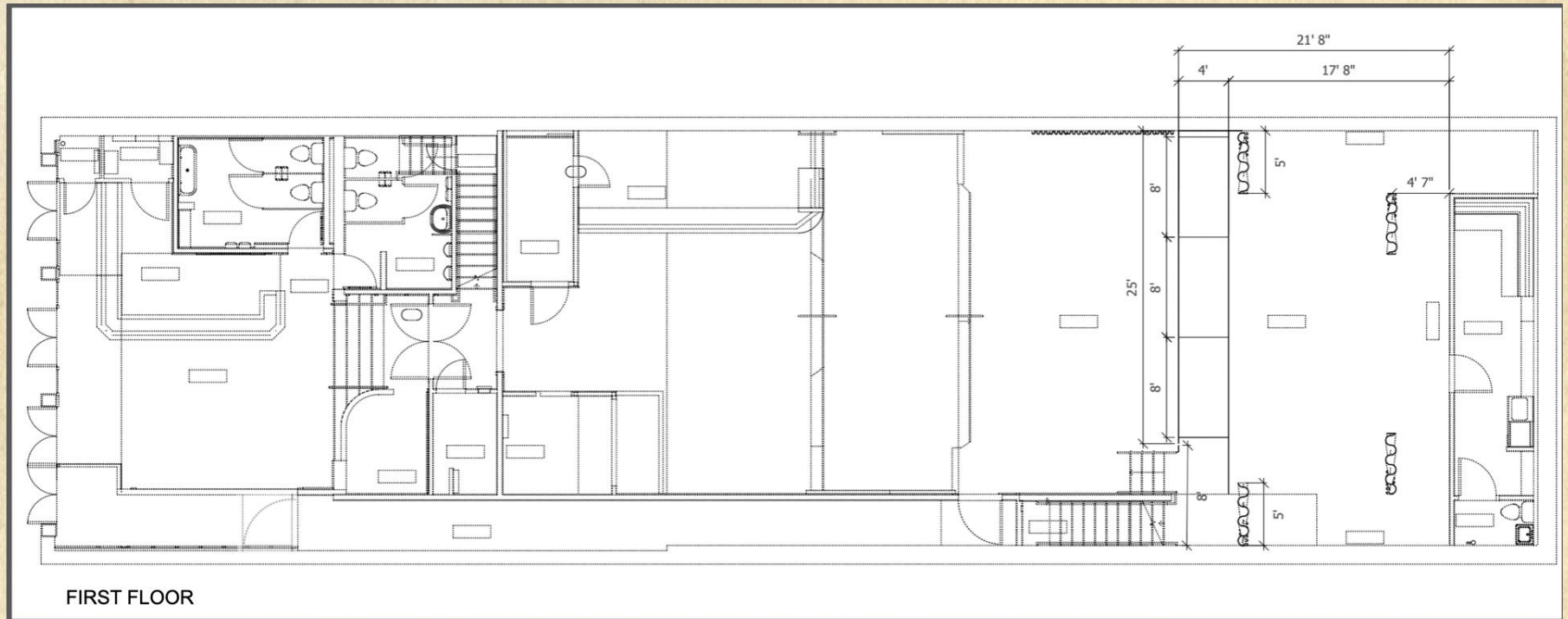
#### **LIGHTING CONTROL:**

Lighting Console: Avolites Quartz

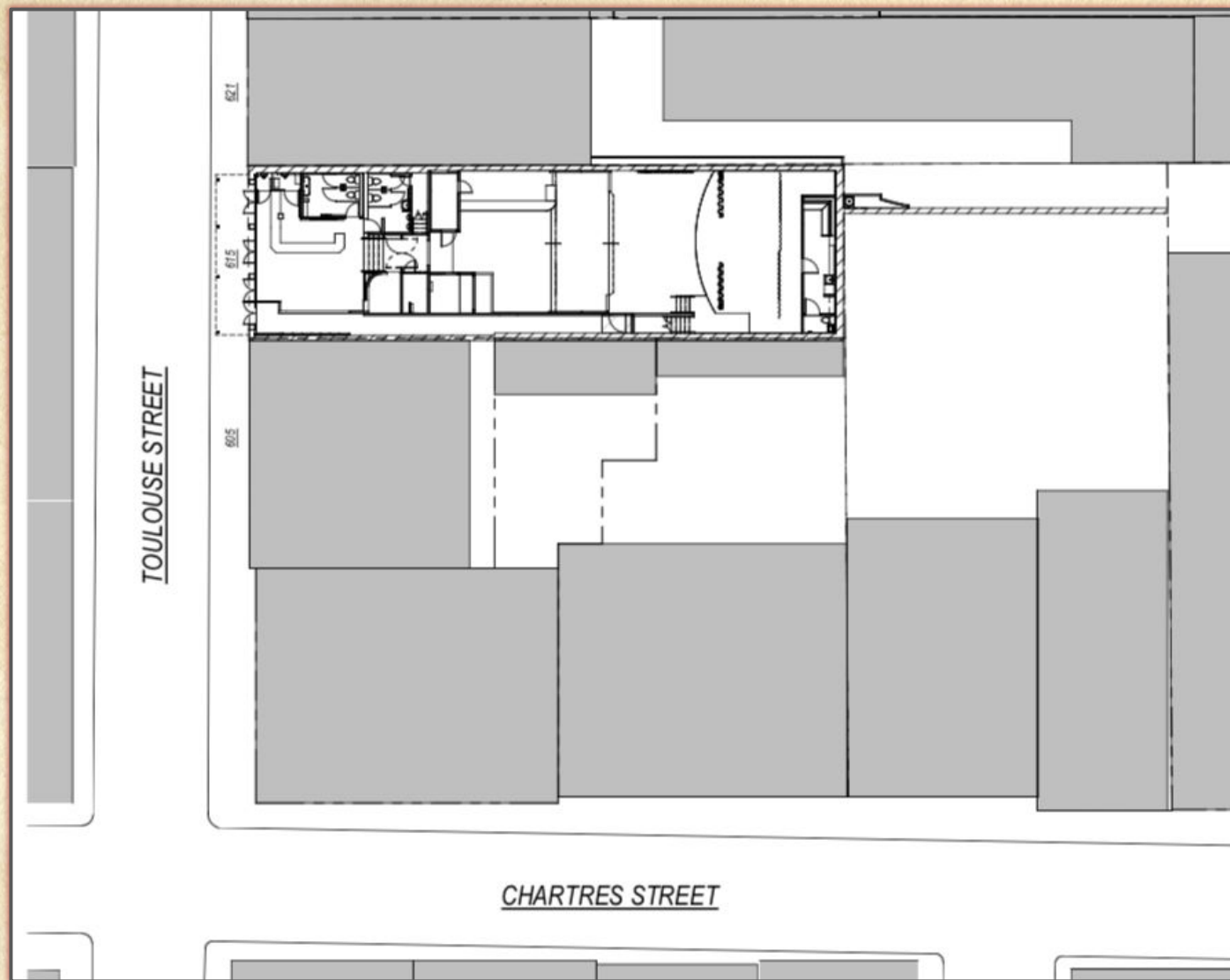
LAYOUT HAS BEEN SLIGHTLY ADJUSTED



# TOULOUSE THEATRE—NEW ORLEANS FLOOR PLAN



# TOULOUSE THEATRE—NEW ORLEANS SITE PLAN



# LOBBY LOUNGE



# SHOWROOM



View from House



View from Stage

Additional Photos of Venue [Available Here](#)

# GREEN ROOM

